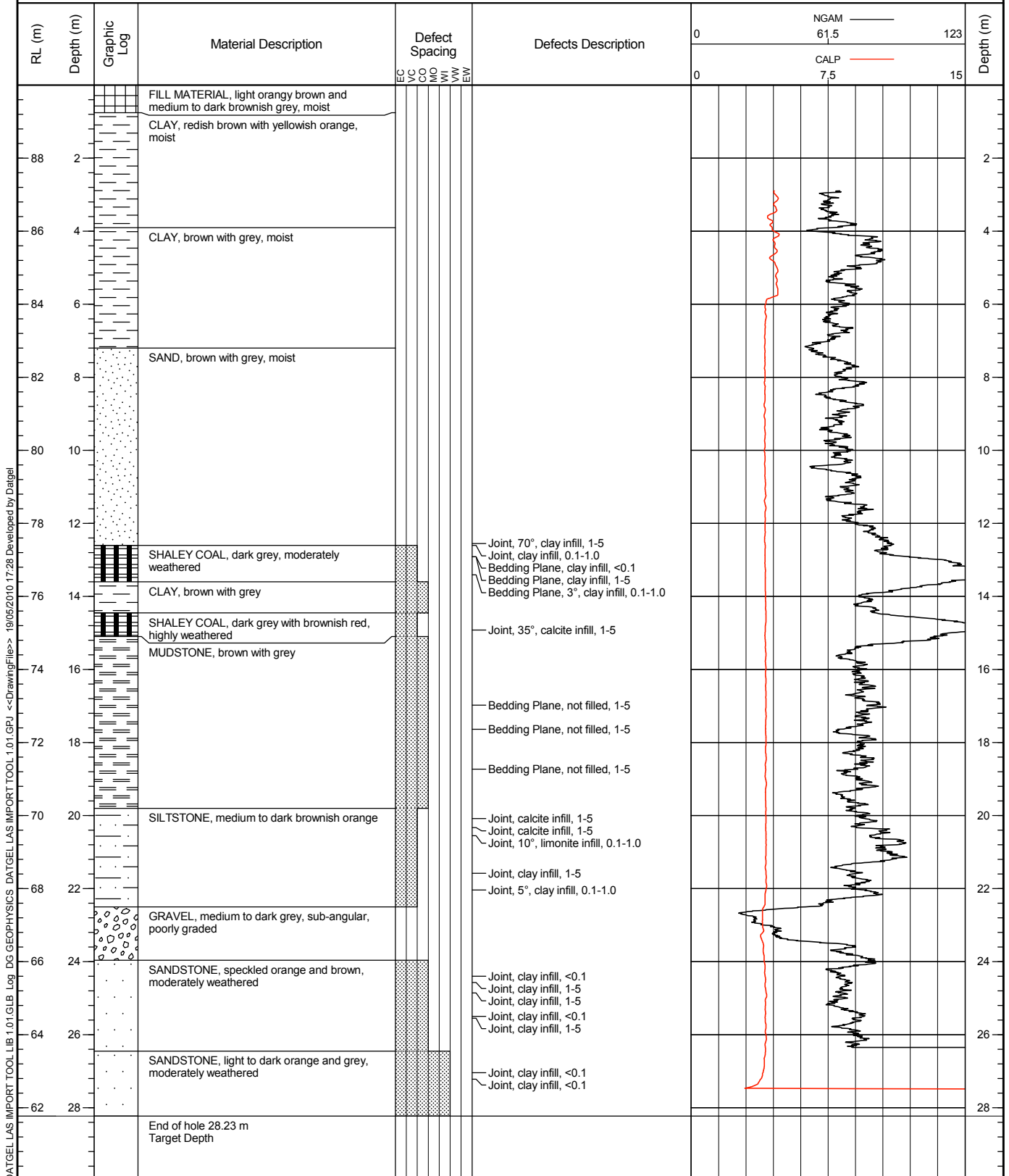


Co-ord. E : 1500.00m
 Co-ord. N : 1200.00m
 Elevation : 90.00m
 Datum :

Area / Location : Area ABC
 Hole Angle : -90°
 Bearing : 0°
 Total Hole Depth : 28.23 m

Drill Model & Mounting : Boart Long Year 346
 Barrel Type & Length : 3.15m Triple Tube
 Drilling Fluid : Polymer
 Log Basis : Partly Cored Hole

Hole Commenced : 01/01/2010
 Hole Completed : 02/01/2010
 Supervised By :
 Checked By :



DATGEL LAS IMPORT TOOL LIB 1.01.GLB Log DG GEOPHYSICS DATGEL LAS IMPORT TOOL 1.01.GPJ <<DrawingFile>> 19/05/2010 17:28 Developed by Datgel

Logged By:

Scale: 1 : 150